

Begleitmuster für die linke Hand

Akkordfolge

Am F G D

Begleitmuster für die linke Hand

Musical notation for the left hand accompaniment pattern in 4/4 time. The bass clef is used. The pattern consists of four measures, each with a chord label above it: Am, F, G, and D. The Am measure has a quarter note on C2, a quarter note on E2, and a quarter note on G2. The F measure has a quarter note on C2, a quarter note on E2, and a quarter note on F3. The G measure has a quarter note on C2, a quarter note on E2, and a quarter note on G3. The D measure has a quarter note on C2, a quarter note on E2, and a quarter note on F#3. The piece ends with a double bar line and repeat dots.

Dreiklangs-Töne in der rechten Hand spielen

Musical notation for playing triad tones in the right hand in 4/4 time. The treble clef is used. The pattern consists of four measures, each with a chord label above it: Am, F, G, and D. The Am measure has a whole note on C4. The F measure has a whole note on C4. The G measure has a whole note on C4. The D measure has a whole note on C#4. The piece ends with a double bar line and repeat dots.

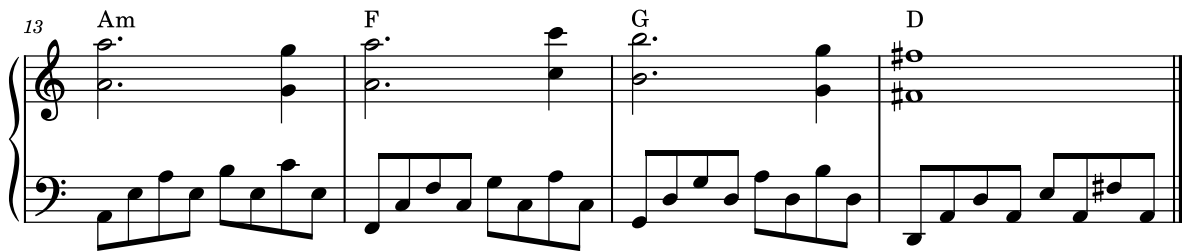
Melodie ausschmücken

Musical notation for decorating the melody in 4/4 time. The treble clef is used. The pattern consists of four measures, each with a chord label above it: Am, F, G, and D. The Am measure has a quarter note on C4, a quarter note on E4, and a quarter note on G4. The F measure has a quarter note on C4, a quarter note on E4, and a quarter note on F5. The G measure has a quarter note on C4, a quarter note on E4, and a quarter note on G5. The D measure has a quarter note on C4, a quarter note on E4, and a quarter note on F#5. The piece ends with a double bar line and repeat dots.

Steigerung durch Oktaven

Musical notation for increasing the melody through octaves in 4/4 time. The treble clef is used. The pattern consists of four measures, each with a chord label above it: Am, F, G, and D. The Am measure has a quarter note on C4, a quarter note on E4, and a quarter note on G4. The F measure has a quarter note on C4, a quarter note on E4, and a quarter note on F5. The G measure has a quarter note on C4, a quarter note on E4, and a quarter note on G5. The D measure has a quarter note on C4, a quarter note on E4, and a quarter note on F#5. The piece ends with a double bar line and repeat dots.

Begleitmuster 2 + Oktaven



Begleitmuster für die linke Hand variieren



Lerne das moderne Klavierspiel nach Akkorden mit meinem Onlinekurs „Akkorde & Pop Improvisation I“.

Weitere Infos auf klavierlernenmitmelanie.de



Ganzer Ablauf (Beispiel)

Begleitmuster für die linke Hand

Komponieren im Filmmusik-Stil

Klavier lernen mit Melanie

Intro

Am F G D

Steigerung 1

5 Am F G D

Steigerung 2

9 Am F G D

Outro

13 Am F G D